

SOMloq2

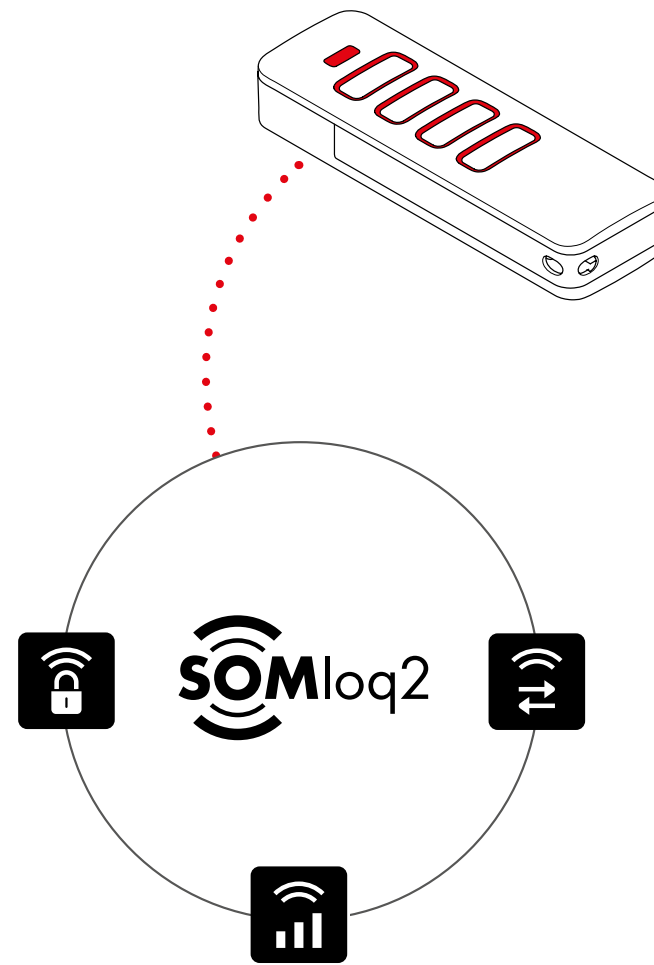
Bi-directional radio system

At SOMMER, comfort and safety go hand-in-hand. You can only really enjoy the comfort of our radio products when you feel secure.

Our new products, equipped with the bi-directional SOMloq2 radio system, transmits radio signals in both directions when the corresponding transmitter is used, e.g. Pearl Vibe.

The system also offers:

- Feedback of whether the sent command is being processed by the receiver
- The option of querying door positions
- A very secure 128 bit AES encryption; rolling code
- Improvement of the range thanks to intelligent receivers, forwarding of the radio signal of a hand-held transmitter by other receivers is possible
- Cyclical repetition of radio commands by the hand-held transmitter until reception is confirmed by the receiver (operator)
- Backward compatibility to the Somloq Rollingcode radio system



SOMlink

Intelligent control technology

The SOMlink module offers a wide variety of setting options for the new SOMMER products on your smartphone or tablet by means of the Web app.

The following functions are available:

- Service interface for SOMloq2-compatible operators/receivers
- Start-up assistance, e.g. deleting transmitter or adapting speed
- Configuration of operator/receiver, e.g. changing lighting duration
- Reading out/saving and loading of system data
- Visualisation of force curves

TECHNICAL DATA

Available soon:

Operator	S 9060 base ⁺	S 9080 base ⁺	S 9110 base ⁺
Max. travel path	7,500 mm	7,500 mm	7,500 mm
Max. door width/door height	4,500 mm/2,500 mm	6,000 mm/2,500 mm	8,000 mm/2,500 mm
Sectional-, retractable-, canopy door			
Sectional-horizontal-, side-opening sectional-, side hinged door	2,500 mm/2,500 mm	2,500 mm/3,000 mm	2,500 mm/3,500 mm
Travel length	2,750 mm	2,750 mm	2,750 mm
Max. door weight	120 kg	160 kg	200 kg
Max. pulling and pressure force	600 N	800 N	1,100 N
Max. running speed	240 mm/s	210 mm/s	180 mm/s
Power consumption (standby)	< 1 W	< 1 W	< 1 W
Switch-on duration after S3 in %	40%	40%	40%
Connection for warning light	Yes (DC 24 V/25 W)	Yes (DC 24 V/25 W)	Yes (DC 24 V/25 W)
Number of radio memory positions	40	40	40

INCLUDING



SOMloq2

Pearl Vibe

- 4-command transmitter
- Bi-directional radio system, frequency: 868.95 MHz
- Efficient vibration motor for long battery life
- Reliable radio control system with good range (approx. 60 m - 150 m)*
- Noticeable quality of radio control system thanks to vibration for confirmation of reception
- 128 bit AES rolling code encryption
- Collision-resistant

4019V000

* environment-dependent

Set S 9060 base⁺

8700V000

3-piece track including carriage, roof control, fixing material (bracket, attachment to header and ceiling

mounting unit), push arm and door bracket, pre-programmed Pearl Vibe 4-command transmitter (# 4019V000)



DEEN-#650020001 - 10/15. Literal errors, errors and technical changes: excepted.

SOMMER



SOMMER

SOMMER ANTRIEBS- UND FUNKTECHNIK GMBH
HANS-BÖCKLER-STR. 21-27 | D-73230 KIRCHHEIM/TECK
PHONE +49 (0)7021/8001-0 | FAX +49 (0)7021/8001-100
INFO@SOMMER.EU | WWW.SOMMER.EU

SOMMER GMBH SOMMER_GMBH



The new garage door operator

Faster. Securer. More intelligent. Brighter.

THE NEXT GENERATION OF GARAGE DOOR OPERATORS

QUALITY

- Universal drive for sectional doors, overhead doors, swing doors, canopy doors*, side hinged doors*, side-sectional doors and sliding doors
- LED technology: durable, efficient lighting
- made in Germany
- Saves power: <1 watt standby (corresponds to approx. 1.80€ in energy costs per year)

SAFETY

- Motor with high automatic locking and active counter-pressure in the event of an attempted break-in at any point
- Wear-free chain for high tensile strength
- Connection option for battery pack for emergency operation in the event of a power failure
- Cyclically tested safety facilities
- Locking magnet for motor, locks in any position, even during ventilation function/partial opening (**Lock # 1651V000** available as an option)
- The carriage can be engaged and disengaged in any position with the emergency release (pull cord)
- Bi-directional, encrypted **SOMloq2** radio system

* Special fitting required



FLEXIBILITY

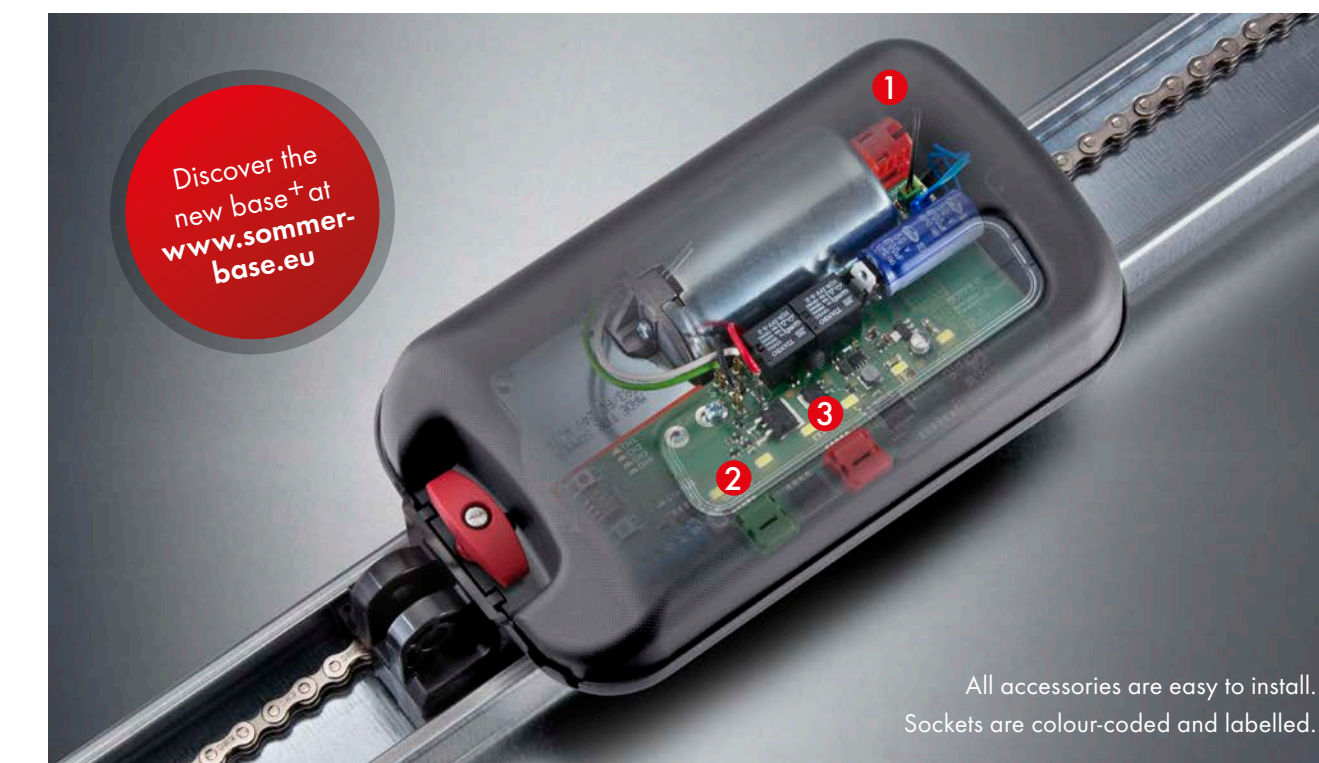
- Countless accessories for extension, e.g. **Memo** hand-held transmitter memory, **Senso** humidity sensor, **Lock** locking magnet, **Lumi base+** additional LED lighting, **buzzer** ...
- Removable carriage without track disassembly
- Easy shortening or lengthening of the track possible (extension set # 10460V000)

INTELLIGENCE

- Automatic learning process: self-learning force curve with continual adjustment
- Optimal speed profile for quick opening and secure closing
- Operation compliant with standards
- Automatic optimisation of door operation through direct entry of measured operating forces
- Pre-selectable door types via DIP switch
- Active braking for moving doors
- Countless setting and querying options via **SOMlink**

ADDITIONAL EQUIPMENT

Create your own optional value-added product



Discover the new base+ at www.sommer-base.eu

All accessories are easy to install. Sockets are colour-coded and labelled.

Track unit

The track unit, included in the standard equipment, allows sectional doors up to 2,500 mm in height and swing doors up to 2,750 mm in height to be opened. Even taller doors can be opened with a track extension (available as an accessory).

Additional connection options without spiral cable directly on carriage

- Connection for safety contact for the slip door
- Connection for safety contact strip OSE or 8k2

Chain

- Galvanised, nickel-plated and high-quality chain
- Wear- and maintenance-free, pre-tensioned via springs with high tensile strength

Ceiling mounting unit

- Flexible and easy to install

Roof control connection option

- Pulse button
- Warning light 24 V/DC, max. 25 watt
- 2- or 4-wire light barrier
- Additional socket light (Lumi base+)
- Additional socket relay
- Socket battery pack

1 Lock

Locking magnet which mechanically blocks the motor in any position up to an attack force of 300 kg, thereby improving the existing break-in protection.

1651V000

2 Senso

For recording temperature and air humidity in the garage. The carriage automatically opens the door a bit if necessary, ensuring perfect circulation. When the optimal value has been achieved, the door is closed, reducing the risk of mould formation.

#10371

Available soon:

Alarm/warning buzzer

Two functions in one product: The alarm buzzer recognises a break-in attempt and outputs a loud signal tone. The warning buzzer, on the other hand, outputs an acoustic signal during the closing process.

#7043V000

3 Memo

Used to expand the memory to 450 hand-held transmitter commands. During service, saved data can be easily adopted for a new carriage.

10373

Lumi base+

Additional LED lighting for the roof control. It is switched in parallel with the lighting in the carriages and can be easily switched on and off using the light function by means of a hand-held sensor.

#7041V000

Available soon:

Parking position laser

Gives optical assistance for perfectly positioning a vehicle in the garage. The laser is active during the opening process and the set light burning time.

100378

MADE IN GERMANY